



Project Overview

The City of Chino's Euclid Avenue Bridge Project (Project) will improve safety, mobility, and connectivity along Euclid Avenue (formerly State Route 83) between Pine Avenue and State Route 71, a key north-south corridor supporting goods movement and commuter travel across four counties. After completing a feasibility study in 2024, the City is advancing the Project into environmental review followed by final design and the eventual reconstruction of Euclid Avenue and its bridge infrastructure over Chino Creek.

The proposed improvements plan to address flooding impacts within the Prado Basin as well as the growing traffic volumes not meeting the capacity and safety needs for one of Chino's most important north-south corridors. Improvements include elevating the current bridge to clear the 50-year flood inundation zone, widening the corridor from two to four lanes, and adding bicycle and pedestrian infrastructure on the east side of the corridor. These enhancements will ensure the corridor meets current design requirements, including Americans with Disabilities Act (ADA) standards, and better serves future transportation needs for all road users, including motorists, pedestrians, and cyclists.

The Project is expected to be funded through a mix of local (Measure V), regional and state sources, and competitive grant opportunities.

Final costs and funding will be confirmed as environmental review and design progress.

Project Goals & Benefits

To address current challenges on Euclid Avenue and support long-term transportation needs, the project aims to:



Improve traffic flow and safety by providing a continuous four-lane roadway and improving key intersections.



Replace and modernize aging infrastructure to meet long-term transportation needs and future travel demand.



Expand multimodal access with new bicycle and pedestrian facilities serving Prado Regional Park and surrounding destinations.

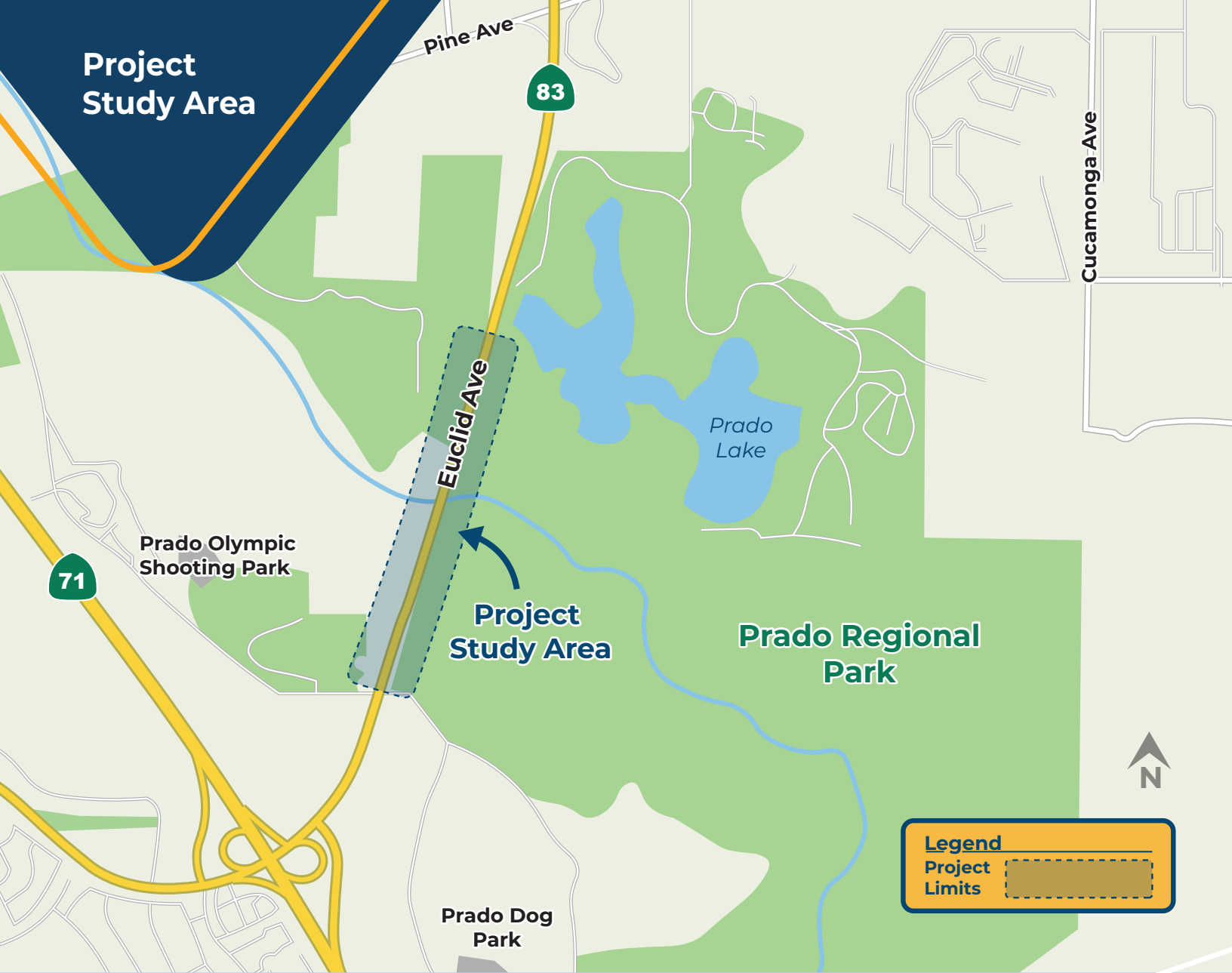


Strengthen regional connectivity between Chino, neighboring cities, and major freeways to better support goods movement and commuter travel.

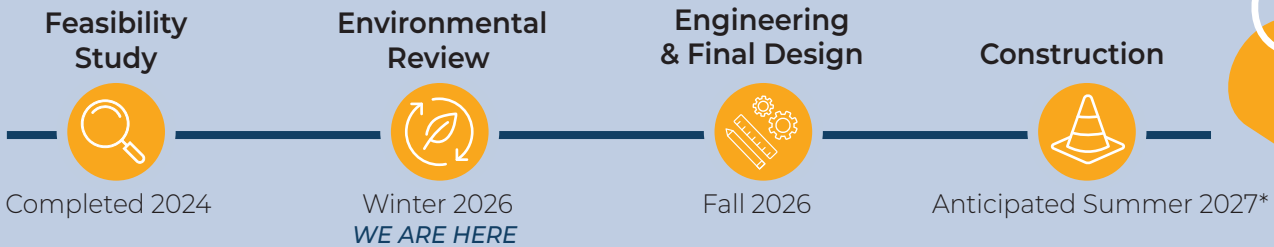


Minimize environmental impacts by limiting work near Chino Creek and repurposing the existing bridge as a dedicated wildlife crossing.





Project Timeline



*Contingent on securing funding for construction.



Get Involved & Stay Connected!

Public involvement is a critical component throughout this process. Visit the website to learn more about the project, upcoming engagement opportunities, and sign up for updates.

-  CityofChino.org/Euclid
-  909.264.8860
-  Euclid@CityofChino.org

