


**KEYNOTES**

- 1. Landing @ lower level (min. 6'-0" L.).
- 2. Min. 48" wide ramp @ max. 1:12 (8.33%) slope.
- 3. Landing @ upper level (min. 5'-0" L.).
- 4. Solid sheet metal gate width +42" min.
- 5. Solid sheet metal gate (min. 3'-0" width).
- 6. Min. 2'-0" strike-edge clearance.
- 7. Decorative block/Tilt Up enclosure walls.
- 8. Trash bins.
- 9. Wheelchair turning circle (min. 60" dia.).
- 10. Solid sheet metal gates.(Factory Finish)
- 11. Min. 42" strike-edge clearance.
- 12. Level landing.
- 13. Min. 5'-0".
- 14. Min. 5'-0".
- 15. Min. 42" clear.
- 16. Min. 48" clear.

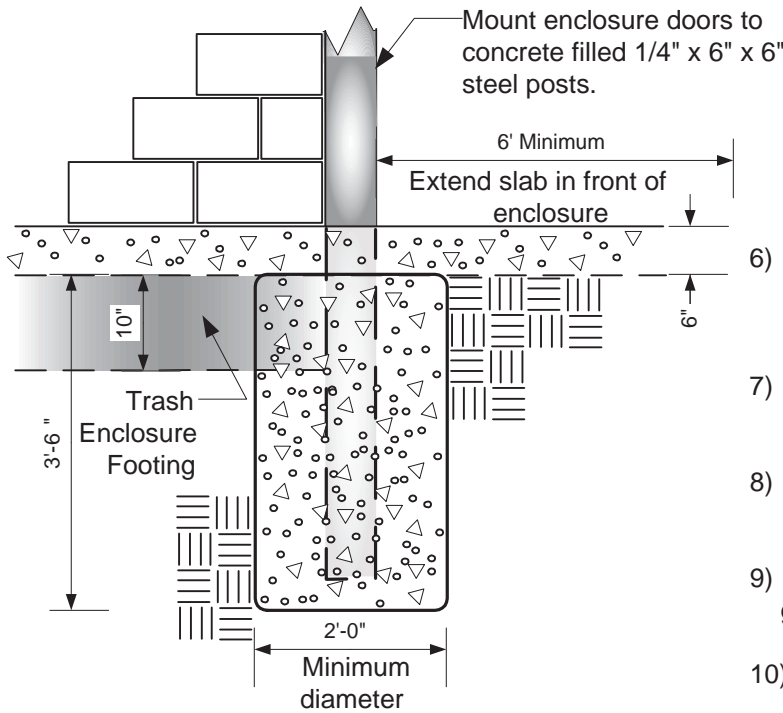
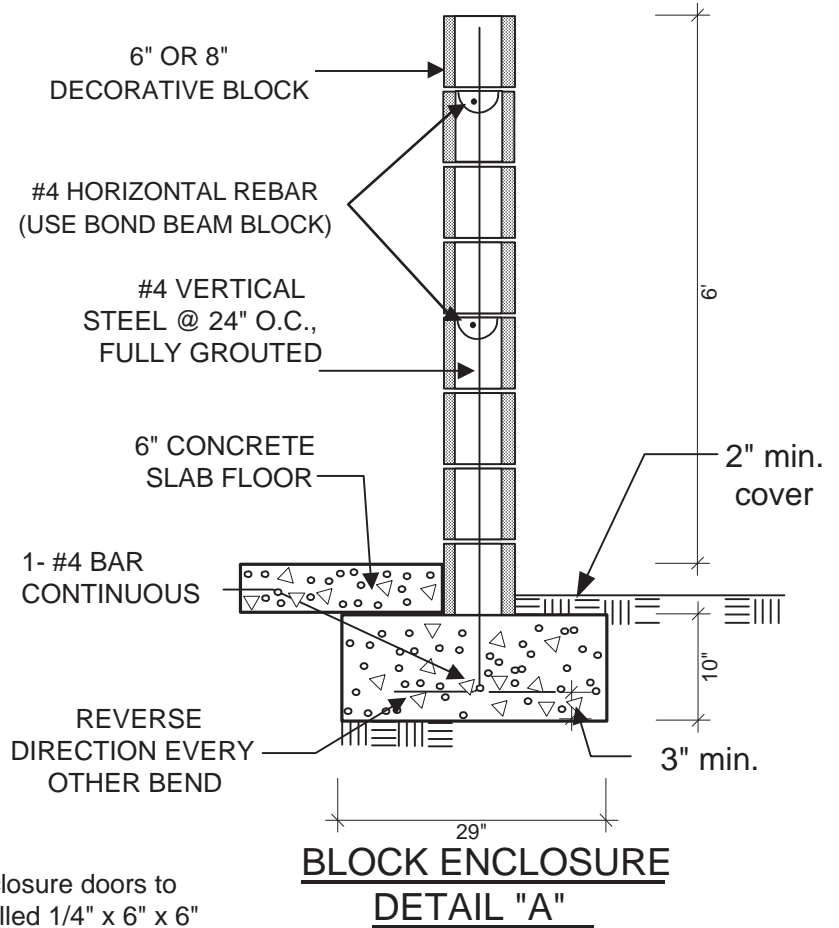
**GENERAL NOTES**

- 1. Trash enclosures shall be located in area accessible to trash vehicles. The numbers and locations shall be subject to Community Development Department review and approval.
- 2. The trash enclosures commercial and multi-family residential projects shall have overhead trellis structures and incorporate the following design features: architecturally integrated into the design of the project; separate pedestrian access; and large enough to accommodate two trash bins.

	CITY of CHINO		
	<b>Accessible Trash Enclosure</b>		
(909) 334-3251	13220 Central Avenue, Chino, CA 91710		
Fax (909) 334-3729	8/06/2015		1 of 2


**CONSTRUCTION STANDARDS**

- 1) Walls are to be of decorative block, masonry, or similar materials. (Not precision block)
- 2) Gates are to be of solid construction.
- 3) Pedestrian access is required if in residential or multi-tenant areas. Consult with the Building Division for those requirements.
- 4) Double swing gates shall have the swivel spots outside of the opening area of the enclosure. Swivel points shall be attached to concrete filled steel posts/columns at ends of walls.
- 5) Enclosure shall be on a level pad at ground level. The area between the pad and the pick up area shall be a paved area 6' deep for the width of the enclosure and shall not exceed a grade of 2 percent.



SIZE REQUIREMENTS

- 6) Minimum inside dimensions shall be as shown on sheet 1 of 2 of this standard for commercial, industrial and multi-tenant facilities.
- 7) Commercial enclosures shall be configured to allow the enclosure of two-three yard dumpsters.
- 8) Industrial enclosures shall be configured to allow the enclosure of three-three yard dumpsters.
- 9) Each bay shall have a separate pair of gates/doors that comply with item #2 above.
- 10) Minimum wall and gate height to be 6'-0" .

	CITY of CHINO		
	<b>Accessible Trash Enclosure</b>		
(909) 334-3251	13220 Central Avenue, Chino, CA 91710		
Fax (909) 334-3729	<b>8/06/2015</b>		<b>2 of 2</b>